

# Summary of the RG3 Session

## 13th March 2022 @UGM (Online)



JAPAN SOCIETY FOR THE PROMOTION OF SCIENCE

日本學術振興會



12:00-17:00	(JST = GST+9:00hrs)	<b>RG3 Oral Presentation</b>	
12:00-12:05		<b>Opening &amp; Introduction</b>	
12:05-13:20		<b>Session 1. Growth, planning and silviculture (Chair: Owari)</b>	
12:05	Mandy Maid (UMS)	The growth performance of one-year-old <i>Octomeles sumatrana</i> and <i>Terminalia subspatulata</i> King on degraded forest land in Sandakan, Sabah	p.49
12:20	Kritsadapan PALAKIT (KU)	Impacts of Tree Coring on Growth of <i>Pinus kesiya</i> Royle ex Gordon	p.50
12:35	Toshiaki OWARI (UTokyo)	Old Sugi ( <i>Cryptomeria japonica</i> ) plantations at the University of Tokyo Chiba Forest: Long-term growth trends and current status	p.51
12:50	Keisuke TOYAMA (UTokyo)	Historical forest management plans as long-term research materials	p.52
13:05	Chieh-Yin CHEN (NTU)	Study of mycorrhizal communities of rehabilitation a <i>Cryptomeria japonica</i> plantations to a mixed deciduous and coniferous forest	p.53
(Break)			
13:40-14:40		<b>Session 2. Monitoring and policies (Chair: Phua)</b>	
13:40	Siti Husna Nurrohmah (UGM)	Spatial and Temporal Distribution of <i>Ganoderma</i> Sp at Urban Forest Gadjah Mada University	p.54
13:55	Megantara Agustina Pertiwi Massie (UGM)	The Dynamics Of Ujung Pangkah Mangrove Coverage (KEE) Using Combined Mangrove Recognition Index	p.55
14:10	Meizhi LIN (HU)	Remote Sensing of Tropical Rainforest Biomass Changes in Hainan Island, China from 2003 to 2018	p.56
14:25	An-Chi LOU (NTU)	Development and implementation of community forestry policies in Taiwan	p.57
(Break)			
15:00-16:00		<b>Session 3. Certification and ecosystem services (Chair: Perera)</b>	
15:00	Chokdee KHANTAWAN (KU)	Forest Management Certification Status of Rubber Plantations in Thailand	p.58
15:15	Rajitha RUPASINGHE (USJ)	REVISITING FOREST CERTIFICATION IN SRI LANKA: THE FOREST MANAGEMENT AND EXPORT WOOD-BASED MANUFACTURING SECTOR PERSPECTIVES	p.59
15:30	Xiaolan YAO (HU)	Ecosystem services and conservation priority regions of the Hainan Tropical Rainforest National Park in China	p.60
15:45	Kamlisa Uni Kamlun (UMS)	Mapping Ecosystem Services in Tropical Wetland Area of Sabah, Malaysia	p.61
(Break)			
16:20-17:00		<b>General Discussion &amp; Closing</b>	

Webex (モアレーションされたミュート解除モード) ミーティング情報 RG3 メニューバーを表示する

# Result



Table 1. Statistic of vegetation density in KEE Ujungpangkah

Density	CMRI Classification	Minimum value	Maximum value	Pixel		Area (Hectare)	
				2020	2000	2020	2000
Low	0.200-0.42036	0.2	0.42036	14072	9823	1266.48	884.07
Medium	0.4203-0.64074	0.42037	0.64074	8089	2060	728.01	185.4
High	0.64075-0.86111	0.64075	0.86111	7439	90	669.51	8.1

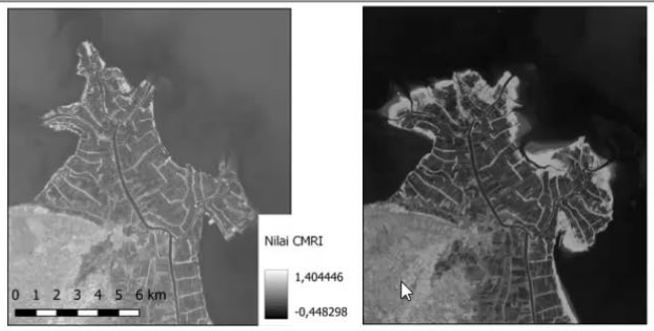


Figure.3 (a) Map of CMRI at KEE Ujung Pangkah year 2000 dan (b) year 2020

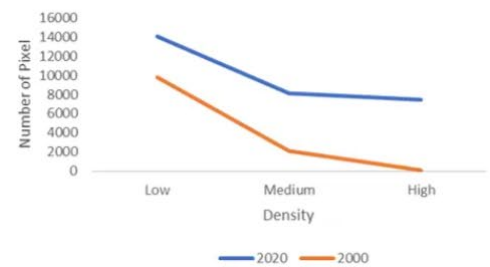


Figure.4 Graph of vegetation density in KEE Ujungpangkah

**Early growth performance of indigenous *Octomeles sumatrana* and *Terminalia subspathulata* in an enrichment planting experiment on degraded forest land in Sandakan, Sabah**

- Comparing forest structure, environment characteristics, and silvicultural treatments of sites where *Octomeles sumatrana* (a native species) and *Terminalia subspathulata* (newly introduced one) were introduced
- Best spacing treatment (4m x 4m) and fertilizing strategies were found for both species
- Shade-tolerant but fast-growing species is desirable
  - + Pest tolerance is also important

**Impacts of tree coring on the growth of *Pinus kesiya* Royle ex Gordon**

- The effect of tree coring for dieback (damage & healing) and growth was investigated at *Pinus kesiya* individuals for 5 years through bimonth observation
- No significant difference in growing patterns between with/without-coring groups
- Wound healing analyzed by Gap Light Analyzer showed that only small tree could not fully heal the wound after coring

**Dr. Toshiaki OWARI (UTokyo)**

Sub-session 1

**Old Sugi (*Cryptomeria japonica*) plantations at the University of Tokyo  
Chiba Forest: Long-term growth trends and current status**

- Long-term growth trends of old Sugi (*Cryptomeria japonica*) plantations from experimental plots in UTCBF (, Chichibu and NTU) and inventory plots
- Growth is generally continuing in old plantations
- Large variation exists in growth of old stands

**Dr. Keisuke TOYAMA (UTokyo)**

Sub-session 1

**Historical forest management plans as long-term research materials**

- Introduced public forest management plans(FMPs) and those of UTF
- Research examples using them
- Information about FMPs' availability



**Ms. Siti Husna Nurrohmah (UGM)**

Sub-session 2

**Spatial and Temporal Distribution of *Ganoderma* sp. on Old Trees at Urban Forest Universitas Gadjah Mada**

- Conducted monitoring the distribution of *Ganoderma*, a fungi causing wood decaying, on old trees at urban forest in UGM. Number of fruitbody of fungi, tree condition, disease incidence were recorded
- Root contact seemed to be the cause of spreading
- Increase of infected trees, especially legume trees, and infection severity data were obtained

**Ms. Megantara Agustina Pertiwi Massie (UGM)**

Sub-session 2

**The Dynamics Of Ujung Pangkah Mangrove Coverage (KEE) Using Combined Mangrove Recognition Index**

- Identifying mangrove coverage and knowing its dynamics through examining Landsat data, especially focusing on CMRI index
- Comparing 2020 and 2020, high and medium-density mangrove area were shrinking by logging and land conversion for ponds
- However, there were large additional area caused by accretion (sedimentation)

**Ms. Meizhi LIN (HU)**

Sub-session 2

**Remote Sensing of Tropical Rainforest Biomass Changes in Hainan Island, China from 2003 to 2018**

- Examining scientific big data of remote sensing for Hainan tropical rainforest. EVI (enhanced vegetation index) was used in several models for biomass prediction
- In Hainan island, especially in some regions with intense urbanization and tourism, rainforests and total biomass have been lost especially between 2013 and 2018
- Afforestation in areas with high rainfall is desirable

**Ms. An-Chi LOU (NTU)**

Sub-session 2

**Development and implement of community forestry policies in Taiwan**

- Examined community forestry programs in Taiwanese Forestry Bureau (since 2002) and NTUEF
- The programs have three(FB) or two(NTUEF)-stage designs, and most communities are still in 1st stage
- Compared to other initiatives, community forestry is continuous and helps to build interaction between forestry authorities and communities

**Ms. Chokdee KHANTAWAN (KU)**

Sub-session 3

## **Management Certification Status of Rubber Plantations in Thailand**

- Examined FSC forest certification of rubber plantation in Thailand. FSC covers 0.6% of total plantation
- 4 planting patterns: monoculture, intercropping with trees or other plants, and rubber multiple cropping
- Found and categorized problems (CARs: corrective action requests) were such as implementation of management activities and poor monitoring

**Mr. Rajitha RUPASINGHE (USJP)**

Sub-session 3

**Forest Certification in Sri Lanka: Does it add value to Forest Management and Export Wood-based Manufacturing Sectors?**

- Examined forest certification in Sri Lanka through questionnaire survey and IPA (importance-performance analysis)
- Benefits and deficits of certification were clarified
- Some points are classified as tasks which "should be concentrated" (improvable performance)

**Dr. Xiaolan YAO (HU)**

Sub-session 3

**Ecosystem services and conservation priority regions of the Hainan Tropical Rainforest National Park in China**

- Five ecosystem services in Hainan Tropical Rainforest National Park were quantified spatially and temporally
- Conservation efficiencies in multiple scenarios were compared
- High-altitude area has high priorities of conservation

**Dr. Kamlisa Uni Kamlun (UMS)**

Sub-session 3

## **Mapping Ecosystem Services Supply in Protected Forest Area**

- Mapped Malaysian and Indonesian wetland ecosystem services supply through "matrix model assessment" and thematic analysis, using qualitative assessments and land cover type information
- 19 subservices were determined and mapped
- Deterioration of services was found, especially in "regulating services"



## Dr. Chieh-Yin CHEN (NTU)

### Study of mycorrhizal communities of rehabilitation a *Cryptomeria japonica* plantations to a mixed deciduous and coniferous forest

- For rehabilitating Sugi (*Cryptomeria japonica*) plantation into mixed forest, silvicultural experiment with thinning and planting was conducted. Vegetation and soil microbial communities were examined
- Dominant understory species did not change, but many species were observed and cover ratio recovered after operation

# Symposium Presentation & Publication Plan 2022

## Presentations

- 3rd International Symposium of Long-term Forest Monitoring Research in Asia (UGM, USJP)
- 9th SAUFC (NTU): **mid Aug 2022**
- Small hybrid symposium in Thailand about the growth and yield of **teak** plantation (KU): **Jul or Aug 2022**

## Publications

- Special Issue “Tropical Forestry: Conservation, Management and Utilization” for *Trees, Forests and People* (USJP)
- Book publication “Long-Term Monitoring and Research in Asian University Forests” (CRC Press)
- Special Issue “Long-Term Monitoring of Environmental Changes and Ecosystem Responses in Asian University Forests” for *Forests* (UTokyo)

# Collaborative Research Activity Plan 2022

- Field work and research meeting on **Sugi** plantation (UTokyo, NTU, SNU)
- **Mangrove** carbon project in Sabah (UMS, USJP): *A new project funded by WWF Malaysia will commence this year. Perhaps this can collaborate with Prof. Perera of USJP?*
- Long Mio project (UMS, UTokyo): *Planned to publish 1 paper in the special issue organized by Prof. Perera (USJP) in *Trees, Forests and People*, and 1 paper in *Remote Sensing*.*
- Timber and wood products (USJP)